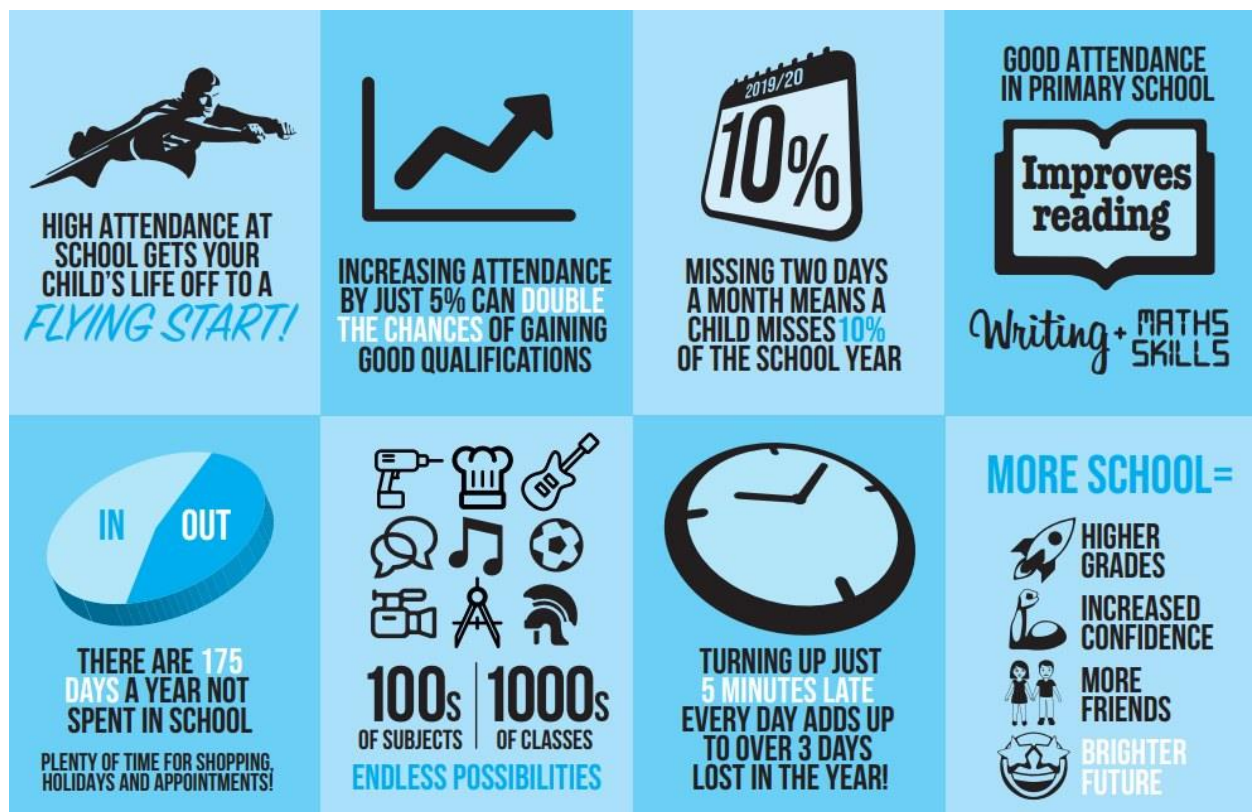




Newsletter for 6th June 2025

Every lesson counts - your child must attend school every single day for the best chance of success!





**"THIS MORNING, HE
WAS WORRIED ABOUT
SCHOOL... BUT LOOK
AT HIM NOW!"**

**MOMENTS
MATTER,
ATTENDANCE
COUNTS.**



HM Government

Head to the Education Hub to find out more.



Headteacher's Message



Dear Families,

Eid Mubarak to all of our families celebrating Eid ul Adha!

This week, congratulations to our Year 5 children who came in first place at Titan Olympians and to our Year 3 children who had a successful visit to Cadbury World, supporting their learning about Mayans and chocolate.

Next week, we are excited to welcome four medical trainees into Reception, Year 1, Year 3 and Year 5; they will be learning about life in school as part of their medical training to become doctors and consultants of the future. We hope that they will also inspire some of our children to consider a medical career in the future.

We are also looking forward to Climate Ed workshops in Year 6 on Tuesday afternoons over the upcoming weeks, led by practitioners who are very knowledgeable about climate change and can't wait to inspire our students about the subject!

Our trips program continues with Year 1's visit to Think Tank on Wednesday 11th June. We also have a great selection of upcoming local sports events participation for our older children, including cricket, football and basketball.

Many thanks to all of the families who supported our Cake Bake and to the members of the staff team who baked the delicious cakes. We raised £200 which will support the purchase of new uniforms for our pupil leaders!

End of Year events will continue to be added to the online calendar, so please visit <https://www.manorparkacademy.co.uk/school-calendar/month/> regularly for updates. Our Year 6 production, Sports Day, School Community Fair and Year 6 Graduation have been added.

Kind regards

Christine Chapman

Discounted Food Boxes and Vouchers

redcap.mrc-epid.cam.ac.uk/surveys/?s=X8C88L7CY33E3TD9 Complete survey here to claim

If you need someone else to collect your child...



*We know that sometimes you may need someone else to collect your child at the end of the school day. **Please make sure that:***

- The person collecting your child is older than 16 (if they are your child's sibling) and over 18 (if they are not a sibling)*
 - You inform the school before 2.30pm if someone new is collecting your child. Though we know other parents collect children for each other, you must let us know that you have given your permission*
-

Thank you for helping us to keep your child safe,

Becky Lewis

Deputy Headteacher

Star of the Week resumes next week!



Apply for free school meals - Important!



[Apply for free school meals - GOV.UK \(www.gov.uk\)](http://www.gov.uk)

Dear Parents and Carers,

*Did you know that by registering your child for free school meals, you're not only ensuring they get a nutritious, hot meal every day but also supporting our school's funding? Every child who is registered for free school meals **generates extra funding for the school, which we can invest directly back into your child's education and wellbeing.** This funding helps us provide more resources, better learning environments, and additional support for our pupils. While all children in Reception, Year 1, and Year 2 (as well as those under the Mayor's Meals scheme in London) automatically receive free school meals, we only receive extra funding if you officially register your child. Please read the attached letter for information on how to apply.*

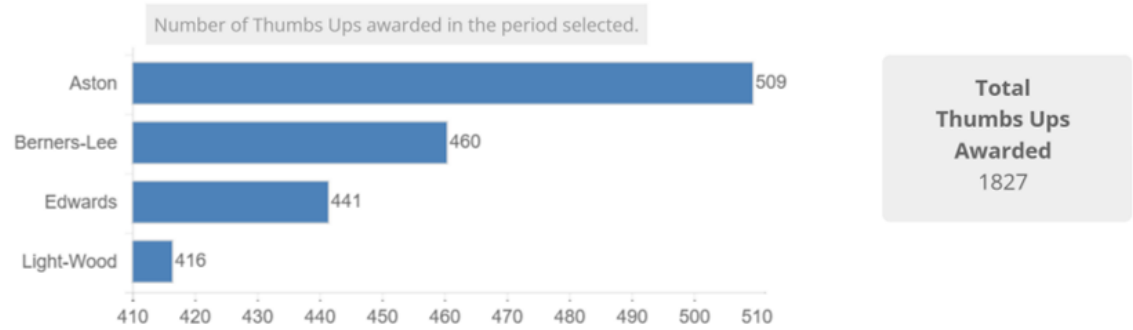


— AND — THE WINNERS *are...*

*House Points are now collected using Marvellous Me. **You can see you child's individual house points by clicking on the 'thumbs up' button.** However many 'thumbs up' they've had, this is the number of house points they have received in school!*

This week's winner overall is Aston!

Thumbs Ups



Safeguarding and Wellbeing Update - Emojis



What Parents & Educators Need to Know about EMOJIS

WHAT ARE THE RISKS?

GENERATIONAL MISCOMMUNICATION

An emoji like 🍷 (thumbs up emoji) might seem friendly to adults, but teens often interpret it as sarcastic or passive-aggressive. These differing interpretations can create confusion or unintended tension in cross-generational conversations.

SHIELDING BULLYING OR PEER PRESSURE

When embedded in emojis, mean-spirited jokes or exclusionary language can fly under the radar. Terms like 'mid' or 'delulu' may seem harmless, but they can be used to undermine peers in subtle ways.

RAPIDLY SHIFTING MEANINGS

Emoji meanings can change overnight. A person standing emoji (🦋) once signified awkwardness but might now be repurposed for something entirely different. This ever-changing lexicon can leave adults in the dark and young people vulnerable to misunderstanding or misuse.

MASKING DISTRESS OR HARM

Some emojis are used to discreetly signal troubling behaviours. For instance, 🍃 (falling leaves emoji) or 💊 (pill emoji) might suggest drug use, while 🌵 (wilted flower emoji) could hint at emotional struggles. Such usage can obscure serious issues, making them harder for trusted adults to detect.

NORMALISING RISKY BEHAVIOURS

Emojis can make harmful actions seem light-hearted or fashionable. Strings like 🔥💊 (fire + 'woozy' face + pill emojis) may appear humorous but can reference partying, intoxication or dangerous challenges, which might otherwise raise red flags.

Advice for Parents & Educators

LEARN THE LINGO

Stay updated with emoji trends and definitions using resources like emojipedia.org or Urban Dictionary. Knowing current meanings builds confidence when engaging with young people and helps spot potential concerns early.

CREATE SAFE SPACES FOR DISCUSSION

Encourage casual chats about emojis, online slang, memes, or social media trends. Showing interest without judgement reassures young people that they can talk about their digital world openly and safely.

ASK, DON'T ASSUME

Approach unfamiliar emojis with curiosity rather than suspicion. A light-hearted "What does 🍷 (juice box emoji) mean these days?" can open conversation and show that you respect their knowledge.

PRIORITISE TRUST OVER SURVEILLANCE

While parental controls and monitoring tools can be useful, emotional safety matters most. Be someone children and young people feel they can come to – not just someone who's watching them.

EMOJI CHEAT SHEET - The following slang terms and emojis are some common examples – please be aware this isn't an exhaustive list.

COMMON EMOJIS:

🤡 (Clown face) Foolishness or clowning around	🙄 (Pleading face) Over-affectionate or 'simping'
😎 (Cool face) Cool, stylish or ruthless	👁️ (Eyes) Watching drama unfold
😍 (Hot face) Intense attraction or excitement	🐐 (Goat) Greatest of all time (G.O.A.T.)
😐 (Moai) Stone-faced, unbothered	👉 (Nails) Confidence, sassiness, or indifference
👑 (Crown) 'Slaying', as in doing great	🚩 (Triangular flag) Red flag; a warning sign about someone's behaviour

POTENTIALLY CONCERNING EMOJIS

🍷 (Ear of corn) Slang for pornography (avoids censorship algorithms)	🌵 (Wilted flower) Often used to convey emotional struggle or sadness
❄️ (Snowflake, snowman, snow cloud) Can symbolise cocaine	🐍 (Snake) Can represent betrayal or being 'two-faced'
🗝️ (Key, lying face) Related to cocaine use	💧 (Water pistol) Sometimes used to reference violence or self-harm
🍃 (Falling leaves, herb, maple leaf) Can symbolise cannabis	⚠️ (Warning) Used to emphasise drama, threats or emotional turmoil
💊 (Pill) May reference drug use or prescription misuse	🍜 (Steaming bowl) Refers to nudes ('noods' is an abbreviation of noodles)

Meet Our Expert

Keith Brani is a globally renowned emoji expert and the Editor in Chief of emojipedia.org, the world's number one emoji resource. He has an MSc in Business Psychology from University College London and an MBA from Quantic School of Business and Technology.



The National College®

Dates for your Diary



Stay and Play Sessions - 9.00 to 10.30am every Thursday

Year 1 ThinkTank Trip - 11th June

Rock Steady Concert - 2.30pm 30th June

School Term Dates for This Year - 2024/25

Please see the calendar below showing all of the school term dates, bank holidays and teacher training days for the next academic year.



Manor Park Calendar 2024/25

August 2024						
Wk	Mo	Tu	We	Th	Fr	Sa Su
31				1	2	3 4
32	5	6	7	8	9	10 11
33	12	13	14	15	16	17 18
34	19	20	21	22	23	24 25
35	26	27	28	29	30	31

September 2024						
Wk	Mo	Tu	We	Th	Fr	Sa Su
35						1
36	2	3	4	5	6	7 8
37	9	10	11	12	13	14 15
38	16	17	18	19	20	21 22
39	23	24	25	26	27	28 29
40	30					

October 2024						
Wk	Mo	Tu	We	Th	Fr	Sa Su
40		1	2	3	4	5 6
41	7	8	9	10	11	12 13
42	14	15	16	17	18	19 20
43	21	22	23	24	25	26 27
44	28	29	30	31		

November 2024						
Wk	Mo	Tu	We	Th	Fr	Sa Su
44					1	2 3
45	4	5	6	7	8	9 10
46	11	12	13	14	15	16 17
47	18	19	20	21	22	23 24
48	25	26	27	28	29	30

December 2024						
Wk	Mo	Tu	We	Th	Fr	Sa Su
48						1
49	2	3	4	5	6	7 8
50	9	10	11	12	13	14 15
51	16	17	18	19	20	21 22
52	23	24	25	26	27	28 29
1	30	31				

January 2025						
Wk	Mo	Tu	We	Th	Fr	Sa Su
1			1	2	3	4 5
2	6	7	8	9	10	11 12
3	13	14	15	16	17	18 19
4	20	21	22	23	24	25 26
5	27	28	29	30	31	

February 2025						
Wk	Mo	Tu	We	Th	Fr	Sa Su
5						1 2
6	3	4	5	6	7	8 9
7	10	11	12	13	14	15 16
8	17	18	19	20	21	22 23
9	24	25	26	27	28	

March 2025						
Wk	Mo	Tu	We	Th	Fr	Sa Su
9						1 2
10	3	4	5	6	7	8 9
11	10	11	12	13	14	15 16
12	17	18	19	20	21	22 23
13	24	25	26	27	28	29 30
14	31					

April 2025						
Wk	Mo	Tu	We	Th	Fr	Sa Su
14		1	2	3	4	5 6
15	7	8	9	10	11	12 13
16	14	15	16	17	18	19 20
17	21	22	23	24	25	26 27
18	28	29	30			

May 2025						
Wk	Mo	Tu	We	Th	Fr	Sa Su
18				1	2	3 4
19	5	6	7	8	9	10 11
20	12	13	14	15	16	17 18
21	19	20	21	22	23	24 25
22	26	27	28	29	30	31

June 2025						
Wk	Mo	Tu	We	Th	Fr	Sa Su
22						1
23	2	3	4	5	6	7 8
24	9	10	11	12	13	14 15
25	16	17	18	19	20	21 22
26	23	24	25	26	27	28 29
27	30					

July 2025						
Wk	Mo	Tu	We	Th	Fr	Sa Su
27		1	2	3	4	5 6
28	7	8	9	10	11	12 13
29	14	15	16	17	18	19 20
30	21	22	23	24	25	26 27
31	28	29	30	31		

Bank holidays 2024/25

26 August '24	August Bank Holiday	26 December '24	Boxing Day	18 April '25	Good Friday	5 May '25	Early May Bank Holiday
25 December '24	Christmas Day	1 January '25	New Year's Day	21 April '25	Easter Monday	26 May '25	Spring Bank Holiday

Teacher Training Days

2 September 2024	3 September 2024	29 November 2024	31 March 2025	21 July 2025
------------------	------------------	------------------	---------------	--------------

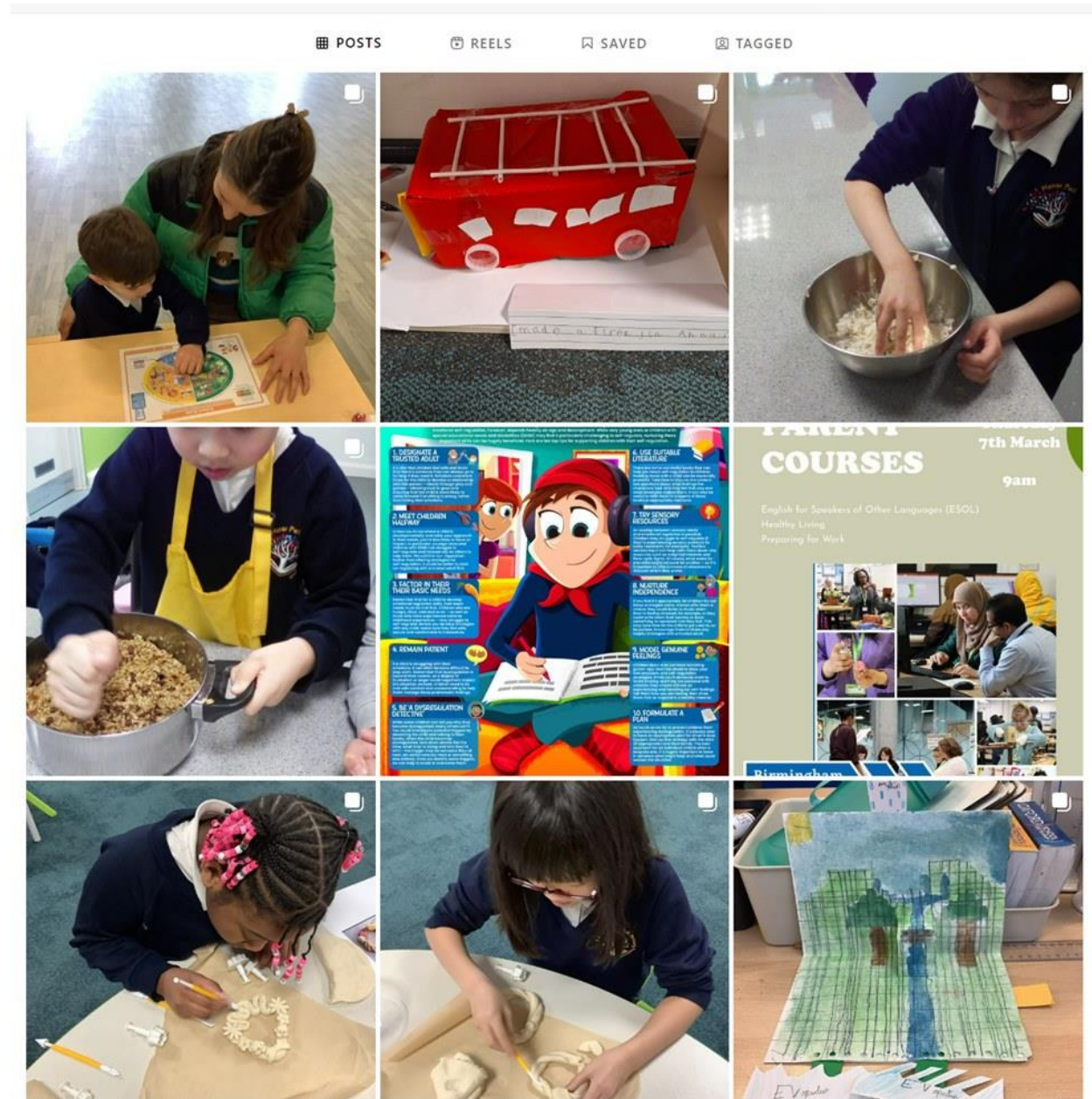


We are a Nut Free School!



Give us a follow on Instagram!

<https://www.instagram.com/manorparkprimaryacademy/>



If you need to report your child's absence...



Please call 0121 327 1023 to report your child's absence by 9.30am

If you need support with your child's attendance, please contact Jo Green via email at enquiry@manorparkacademy.org or call the school office.



**At Manor Park Primary
Academy everyone
has the right to feel safe.**

**At Manor Park Primary
Academy everyone
has the right to learn.**



**We are your Designated Safeguarding Leads.
We can help you.**



Ms Christine Chapman
Headteacher
DSL



Mrs Saima Mahmood
Teacher
DSL



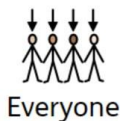
Miss Becky Lewis
**Deputy
Headteacher**
DSL



Mrs Natalie Brindley
SENDCo
DSL



Miss Jo Green
Lead DSL



Everyone



has

a



right

to



feel safe.



Please



talk to



us.

