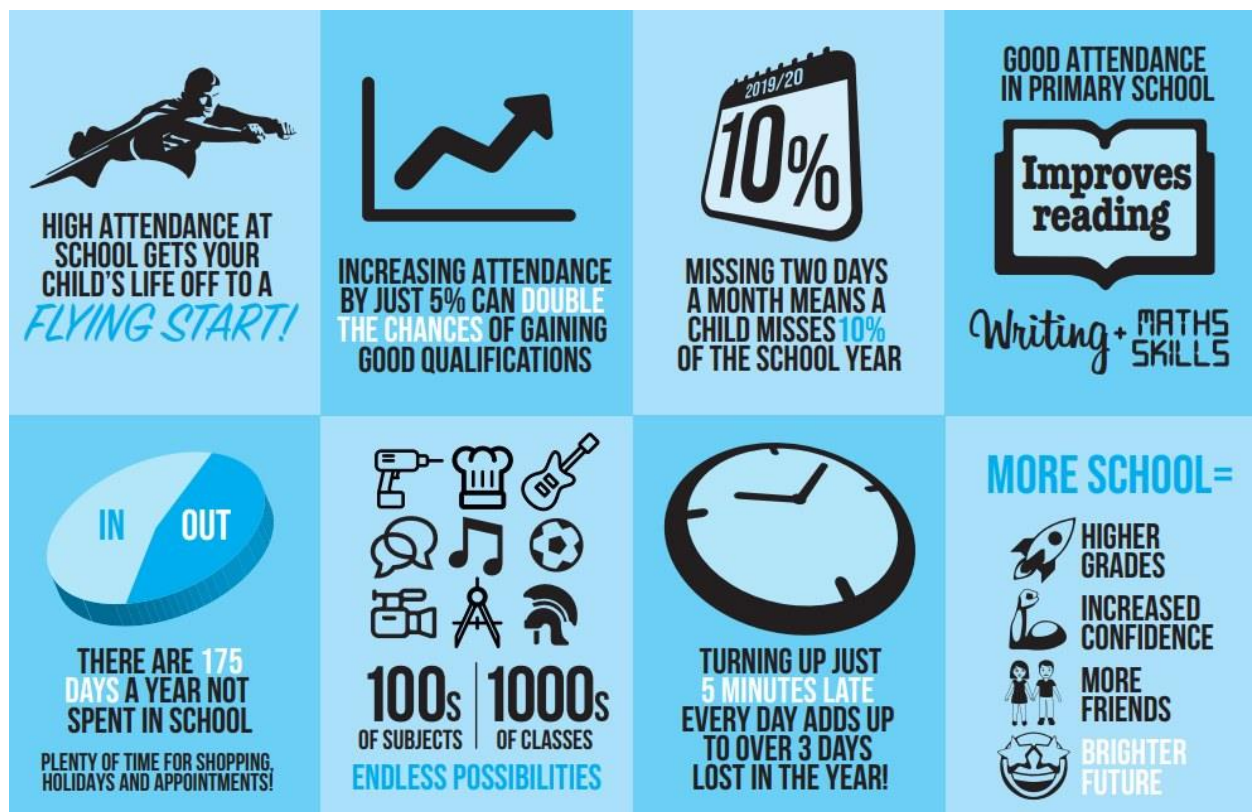




## Newsletter for 16th May 2025

Every lesson counts - your child must attend school every single day for the best chance of success!





**"THIS MORNING, HE  
WAS WORRIED ABOUT  
SCHOOL... BUT LOOK  
AT HIM NOW!"**

**MOMENTS  
MATTER,  
ATTENDANCE  
COUNTS.**



**HM Government**

Head to the Education Hub to find out more.





**1st Place – Emerald & Teal 99.6%**

**2nd Place – Indigo 97.7%**

**3rd Place – Ochre 97.4%**

**Headteacher's Message**



---

*Dear Families,*

*A HUGE well done to our Year 6 children who completed their SATs (Standard Assessment Tests) this week in school. They really impressed their teachers with their resilience and their ability to apply their learning from throughout the year! Many thanks to all of the Year 6 parents who made sure their children were in school on time each morning.*

*In school this week, we have reminded the children that if they become separated from their parent or carer during the busy hometime period, they must return onto the school grounds and find a member of staff to look after them. Please remind your child/ren of this at home too.*

*Next week, we will be teaching NSPCC PANTS and Speak Out, Stay Safe lessons in school; please look out for further information coming out by email. These child friendly, age-appropriate lessons help children to understand abuse in all its forms and teaches them to speak out if they are worried. If you would like to find out more, please visit <https://www.nspcc.org.uk/keeping-children-safe/support-for-parents/pants-underwear-rule/> and <https://learning.nspcc.org.uk/services/speak-out-stay-safe>.*

*On Monday 19th May at 2:30 pm, there will be a representative from Clubs Complete in school to provide information about their after school wraparound childcare provision. Please register if you plan to attend <https://forms.office.com/e/MAsEJpaqCX> . Clubs Complete are also exploring the possibility of running an onsite holiday club during the summer holidays if there is sufficient interest from families, so please look out for further information.*

*School attendance is crucial for your child's academic progress, social-emotional development, and overall well-being. Regular attendance helps pupils stay on track with their learning, builds essential social skills, and prepares them for successful transitions. It's fine to send your child to school with a minor cough or common cold; if you need any guidance on whether your child is well enough to attend school, please visit <https://www.nhs.uk/live-well/is-my-child-too-ill-for-school/>. If you need support with your child's attendance or punctuality, please contact the school on 01213271023 or speak with Miss Green. As a reminder, Friday 23rd May is the last day of term and school reopens for all pupils on Monday 2nd June.*

*Have a lovely weekend,*

*Christine Chapman*

---

## If you need someone else to collect your child...



---

*We know that sometimes you may need someone else to collect your child at the end of the school day. **Please make sure that:***

---

- The person collecting your child is older than 16 (if they are your child's sibling) and over 18 (if they are not a sibling)*
  - You inform the school before 2.30pm if someone new is collecting your child. Though we know other parents collect children for each other, you must let us know that you have given your permission*
- 

---

*Thank you for helping us to keep your child safe,*

*Becky Lewis*

*Deputy Headteacher*

---



## Star of the Week for our value of 'Kindness'



---

*Nursery: Ilyas Ibrahim*

*Indigo: Alaina Ibrahim*

*Gold: Alesha Meem*

*Copper: Osman Minteh*

*Aqua: Mahmood Mohammed*

*Turquoise: Aaimr Poenaru*

*Cerise: Aasiyah Iman*

*Crimson: Safa Bukhari*

*Bronze: Aniyah Collins*

*Ochre: Orisha Wynter*

*Ruby: Yanece Whyte*

*Topaz: Mustapha Konteh*

*Teal/Emerald: All Year 6*

---

**Apply for free school meals - Important!**



---

[Apply for free school meals - GOV.UK \(www.gov.uk\)](https://www.gov.uk)

*Dear Parents and Carers,*

*Did you know that by registering your child for free school meals, you're not only ensuring they get a nutritious, hot meal every day but also supporting our school's funding? Every child who is registered for free school meals **generates extra funding for the school, which we can invest directly back into your child's education and wellbeing.** This funding helps us provide more resources, better learning environments, and additional support for our pupils. While all children in Reception, Year 1, and Year 2 (as well as those under the Mayor's Meals scheme in London) automatically receive free school meals, we only receive extra funding if you officially register your child. Please read the attached letter for information on how to apply.*

---



— AND —  
THE WINNERS  
***are...***

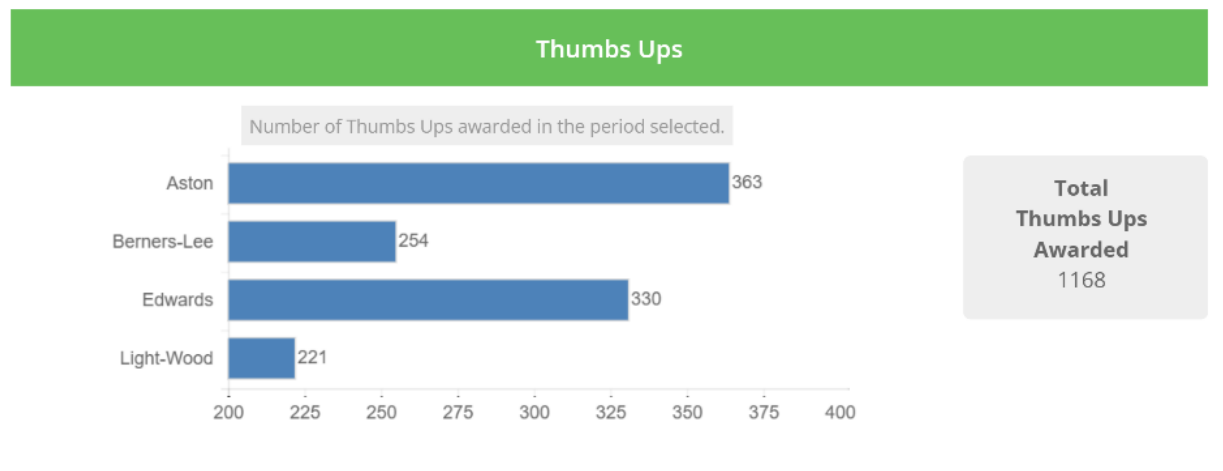


---

House Points are now collected using Marvellous Me. **You can see you child's individual house points by clicking on the 'thumbs up' button.** However many 'thumbs up' they've had, this is the number of house points they have received in school!

*This week's winner overall is Aston!*

---



## Safeguarding and Wellbeing Update - Minecraft



# What Parents & Educators Need to Know about MINECRAFT



## WHAT ARE THE RISKS?

Still the best-selling game of all time, Minecraft is a bastion of creativity and community, with hundreds of millions of players building and crafting in its almost endless world. The popularity of Minecraft among gamers of all ages means it's important to remain informed about the game, including how to play it safely and whether it's suitable for the children in your care. That's why we've created this guide explaining the risks associated with Minecraft and how to ensure a purely enjoyable gaming experience.

### SCARY ELEMENTS

While Minecraft can be seen as a kind of digital LEGO, certain game modes include creatures accompanied by eerie sound effects. These can be a bit too frightening for some younger players, potentially leading to distressing in-game combat and other encounters – although the combat is quite basic and free from any real depiction of violence.

### GRIEFING

Some players in Minecraft take pleasure in deliberately damaging or destroying another person's creations. This behaviour, known as 'griefing', is a form of bullying – it intentionally ruins someone else's experience by erasing hours of their work and forcing them to start over. Many public servers regard griefing as a serious offence and often ban those who engage in it.

### ADDICTIVENESS

Minecraft's focus on creativity means that, as with any creative endeavour, it can be easy to get carried away. If your child is finding it difficult to manage their time because they're drawn in by Minecraft's gameplay loop of resource gathering and building elaborate projects, it could have a knock-on effect on their social interactions and schoolwork.

### PUBLIC SERVERS AND COMMUNICATIONS

With public servers being so easily accessible in Minecraft, it's highly likely that children will end up chatting with strangers through the in-game text chat. Some servers even place an emphasis on social interaction, actively encouraging communication between players. While there's nothing inherently wrong with this, it does carry certain risks. In addition to the concerns around speaking with strangers online, players who host their own servers may have their IP addresses exposed, posing a further security concern.

### ADDITIONAL PURCHASES

Minecraft is available as a free trial on a variety of devices; however, the full game requires a one-off purchase. After that, players have the option to buy additional cosmetic upgrades or subscribe to Minecraft Realms. Realms is an entirely optional subscription service that allows users to run their own private server to play with friends. Without proper supervision, younger players may end up making unintended or excessive purchases.

## Advice for Parents & Educators

### CHOOSE THE RIGHT MODE

Selecting Creative or Peaceful mode allows children to play Minecraft without having to contend with enemies. It's also a great way for you to get used to playing the game with them, since the difficulty level is far lower. This allows you to work together on a long-term project, creating something special without the threat of enemies and creatures attacking you or damaging your building.

### HOST A PRIVATE SERVER

The easiest way to find a safe server for children to play on is to make one yourself. Hosting a server prevents strangers from finding it, unless they've been given its address and password. A private server also lets you control who's allowed to enter and – if necessary – ban anyone who shouldn't be there. This is the closest equivalent to parental controls in Minecraft. Hosting a private server, however, will cost a monthly fee.

### TALK ABOUT STRANGERS

At some point in their lives, almost everyone will make contact with a stranger online. Talking to children about online safety, therefore, is essential – as is having a plan for dealing with any hostile or difficult people. It's important that a child knows never to tell a stranger about themselves online and that they should come to you straight away if they do encounter a problem.

### RESEARCH CONTENT CREATORS

Much of Minecraft's early stages can be an exercise in frustration for players who don't know where to start. Thankfully, there's a wealth of material online and in video format to help you learn the basics. Just be mindful that some of this content may not be appropriate for children, so you should consider watching it yourself first.

### PLAY MINECRAFT WITH YOUR CHILD

As a creative building tool, Minecraft makes it great fun for children to team up and construct vast buildings accompanied by imaginative landscapes, much like working with LEGO or model kits. Playing in a game mode that includes enemies can encourage critical thinking and teamwork; however, you should consider which game mode is appropriate for the child in your care.

### Meet Our Expert

Lloyd Coombes is Gaming Editor at the Daily Star, and has worked in games media for more than 6 years. A long-time gaming enthusiast, he is also a parent and therefore a keen advocate of online safety for children of all ages.



The National College®

## Dates for your Diary



---

***Last day of term - Friday 16th May***

***Return to school - Monday 26th May***

---

## School Term Dates for This Year - 2024/25

---

*Please see the calendar below showing all of the school term dates, bank holidays and teacher training days for the next academic year.*

---





## Manor Park Calendar 2024/25

August 2024						
Wk	Mo	Tu	We	Th	Fr	Sa Su
31				1	2	3 4
32	5	6	7	8	9	10 11
33	12	13	14	15	16	17 18
34	19	20	21	22	23	24 25
35	26	27	28	29	30	31

September 2024						
Wk	Mo	Tu	We	Th	Fr	Sa Su
35						1
36	2	3	4	5	6	7 8
37	9	10	11	12	13	14 15
38	16	17	18	19	20	21 22
39	23	24	25	26	27	28 29
40	30					

October 2024						
Wk	Mo	Tu	We	Th	Fr	Sa Su
40		1	2	3	4	5 6
41	7	8	9	10	11	12 13
42	14	15	16	17	18	19 20
43	21	22	23	24	25	26 27
44	28	29	30	31		

November 2024						
Wk	Mo	Tu	We	Th	Fr	Sa Su
44					1	2 3
45	4	5	6	7	8	9 10
46	11	12	13	14	15	16 17
47	18	19	20	21	22	23 24
48	25	26	27	28	29	30

December 2024						
Wk	Mo	Tu	We	Th	Fr	Sa Su
48						1
49	2	3	4	5	6	7 8
50	9	10	11	12	13	14 15
51	16	17	18	19	20	21 22
52	23	24	25	26	27	28 29
1	30	31				

January 2025						
Wk	Mo	Tu	We	Th	Fr	Sa Su
1			1	2	3	4 5
2	6	7	8	9	10	11 12
3	13	14	15	16	17	18 19
4	20	21	22	23	24	25 26
5	27	28	29	30	31	

February 2025						
Wk	Mo	Tu	We	Th	Fr	Sa Su
5						1 2
6	3	4	5	6	7	8 9
7	10	11	12	13	14	15 16
8	17	18	19	20	21	22 23
9	24	25	26	27	28	

March 2025						
Wk	Mo	Tu	We	Th	Fr	Sa Su
9						1 2
10	3	4	5	6	7	8 9
11	10	11	12	13	14	15 16
12	17	18	19	20	21	22 23
13	24	25	26	27	28	29 30
14	31					

April 2025						
Wk	Mo	Tu	We	Th	Fr	Sa Su
14		1	2	3	4	5 6
15	7	8	9	10	11	12 13
16	14	15	16	17	18	19 20
17	21	22	23	24	25	26 27
18	28	29	30			

May 2025						
Wk	Mo	Tu	We	Th	Fr	Sa Su
18				1	2	3 4
19	5	6	7	8	9	10 11
20	12	13	14	15	16	17 18
21	19	20	21	22	23	24 25
22	26	27	28	29	30	31

June 2025						
Wk	Mo	Tu	We	Th	Fr	Sa Su
22						1
23	2	3	4	5	6	7 8
24	9	10	11	12	13	14 15
25	16	17	18	19	20	21 22
26	23	24	25	26	27	28 29
27	30					

July 2025						
Wk	Mo	Tu	We	Th	Fr	Sa Su
27		1	2	3	4	5 6
28	7	8	9	10	11	12 13
29	14	15	16	17	18	19 20
30	21	22	23	24	25	26 27
31	28	29	30	31		

### Bank holidays 2024/25

26 August '24	August Bank Holiday	26 December '24	Boxing Day	18 April '25	Good Friday	5 May '25	Early May Bank Holiday
25 December '24	Christmas Day	1 January '25	New Year's Day	21 April '25	Easter Monday	26 May '25	Spring Bank Holiday

### Teacher Training Days

2 September 2024	3 September 2024	29 November 2024	31 March 2025	21 July 2025
------------------	------------------	------------------	---------------	--------------

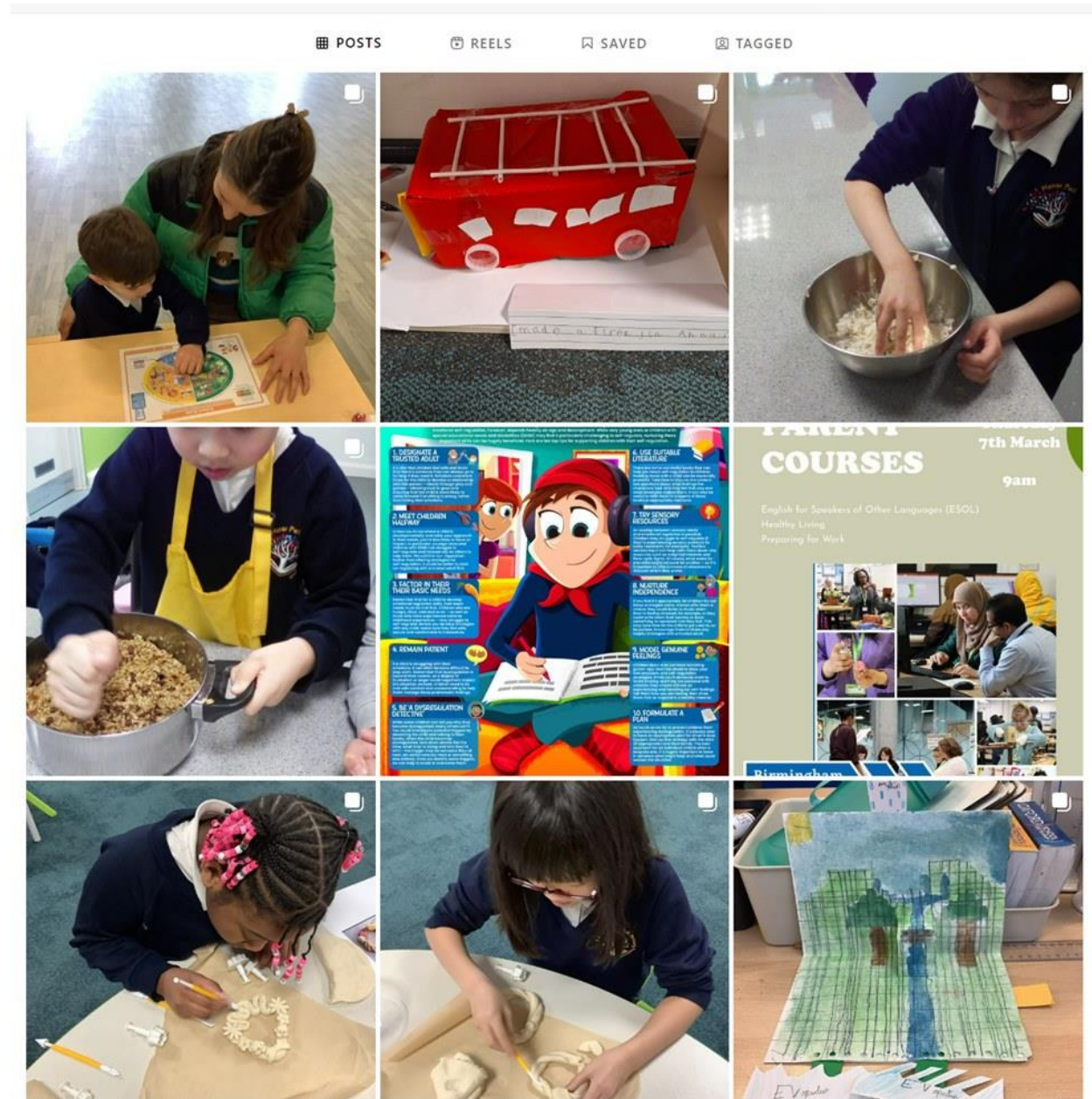


**We are a Nut Free School!**



*Give us a follow on Instagram!*

<https://www.instagram.com/manorparkprimaryacademy/>





If you need to report your child's absence...



---

*Please call 0121 327 1023 to report your child's absence by 9.30am*

*If you need support with your child's attendance, please contact Jo Green via email at [enquiry@manorparkacademy.org](mailto:enquiry@manorparkacademy.org) or call the school office.*

---



**At Manor Park Primary  
Academy everyone  
has the right to feel safe.**

**At Manor Park Primary  
Academy everyone  
has the right to learn.**



**We are your Designated Safeguarding Leads.  
We can help you.**



Ms Christine Chapman  
**Headteacher**  
DSL



Mrs Saima Mahmood  
**Teacher**  
DSL



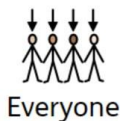
Miss Becky Lewis  
**Deputy  
Headteacher**  
DSL



Mrs Natalie Brindley  
**SENDCo**  
DSL



Miss Jo Green  
**Lead DSL**



Everyone



has

a



right

to



feel safe.



Please



talk to



us.

