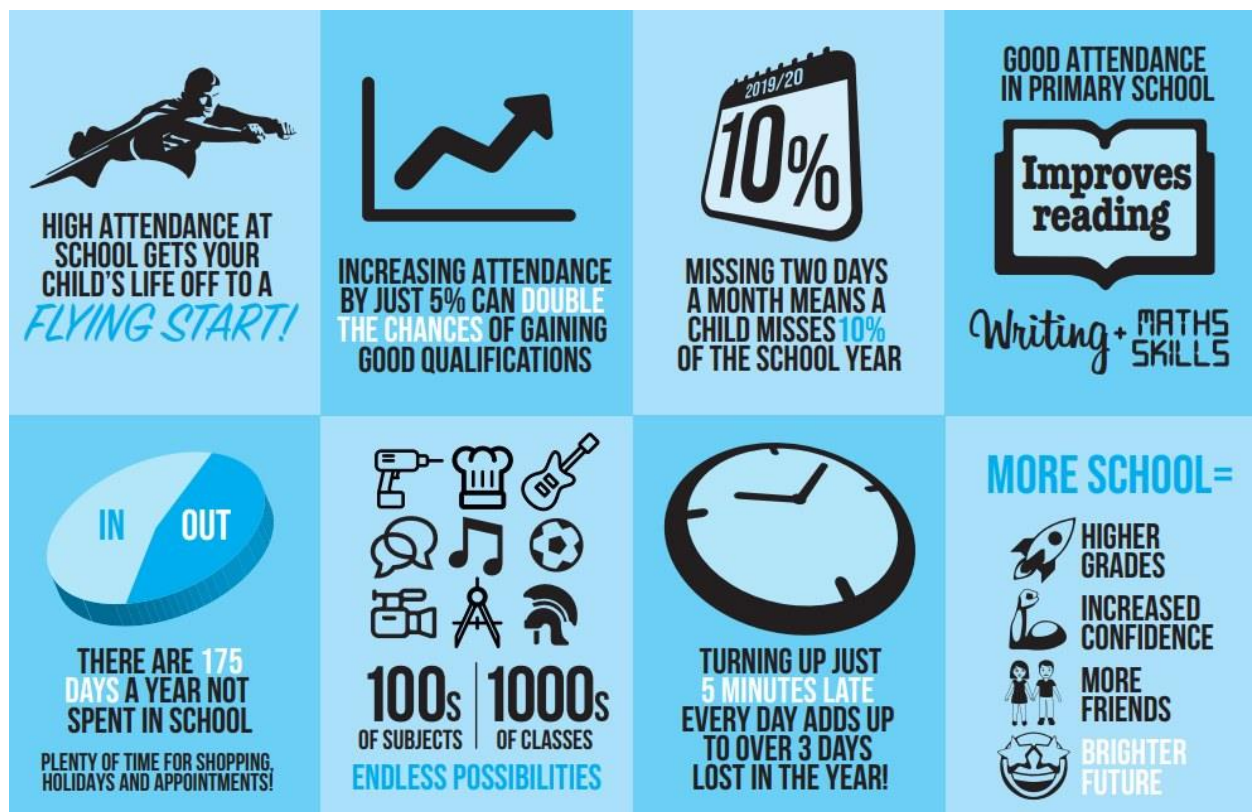




Newsletter for 15th November 2024

Every lesson counts - your child must attend school every single day for the best chance of success!





Top Attendance for the Week

1st Place – Emerald 99.2%

2nd Place – Copper 98.8%

3rd Place – Gold 98.6%

Courage

Resilience

Gratitude

Respect

Aspiration

Kindness



**"THIS MORNING, HE
WAS WORRIED ABOUT
SCHOOL... BUT LOOK
AT HIM NOW!"**

**MOMENTS
MATTER,
ATTENDANCE
COUNTS.**



HM Government

Head to the Education Hub to find out more.



Headteacher's Message



Dear Families,

This week, Year 4 enjoyed a trip to the Birmingham Wildlife Conservation Park on Monday, supporting their learning about animals in science, and children and staff wore odd socks to school on Tuesday to celebrate Odd Socks Day. Odd Socks Day was part of Anti-Bullying Week, during which all of the children in school learnt what bullying is, how to seek support if they are being bullied, and how to 'choose respect'. You can find out more at <https://anti-bullyingalliance.org.uk/>.

School has a range of brand new healthy cookery books available for parents and carers to borrow, to support healthy lifestyles. You can find out about the range of books available at <https://sway.cloud.microsoft/gkXiID1RZVhkqHMq?ref=Link> or see the poster in the front office. Any member of the school community can sign out one of the books for a week from the school office.

Our BAES adult classes started this week. They will be running every Thursday. From 9:15-11:15, there is a healthy cooking class that takes place in our amazing DT kitchen, and from 1:15-3:15

there are ESOL classes. Join up for either (or both!) by filling in a form at the school office, or come along on the day. Find out more at <https://sway.cloud.microsoft/qGGnEG9BGwdoYk2R?ref=Link> .

Next week, we are looking forward to a visit from Laura Khan from RSPCA. She will be teaching us about the impact of litter on local wildlife and will be leading some year groups on local litter picks, one of our 11BEFORE11 promises "Caring Campaigners" <https://www.manorparkacademy.co.uk/news-events/11-before-11-events/> .

*Year 1 Parents, you are invited to join our Parent Carer Phonics Workshop. Unfortunately, our Parent Carer KS1 Phonics Workshop needs to be postponed and will now take place on **Monday 25th November at 9:00 am**. This session will include a demonstration of part of a phonics lesson, will explain how we teach your child to read, and how you can support at home.*

Please look out for letters and email coming out on Monday, inviting parents and carers to join our Parent Council. We welcome parent voice, so this is a great way to share your views and ideas! Many thanks to those parents and carers who completed our Wraparound survey. Results have been shared with external providers who are carrying out a feasibility survey and funding bid for our school. Once we have received an update, I will inform families.

*As a reminder, **Friday 29th November is a Staff Training day so school is closed for pupils.***

Have a lovely, safe weekend.

Kind regards

Christine Chapman

Headteacher

Apply for free school meals



[Apply for free school meals - GOV.UK \(www.gov.uk\)](http://www.gov.uk)

Dear Parents and Carers,

Did you know that by registering your child for free school meals, you're not only ensuring they get a nutritious, hot meal every day but also supporting our school's funding? Every child who is registered for free school meals generates extra funding for the school, which we can invest directly back into your child's education and wellbeing. This funding helps us provide more resources, better learning environments, and additional support for our pupils. While all children in Reception, Year 1, and Year 2 (as well as those under the Mayor's Meals scheme in London) automatically receive free school meals, we only receive extra funding if you officially register your child. Please read the attached letter for information on how to apply.

FREE Vouchers for Milk and Food



What is Healthy Start?

If you're more than 10 weeks pregnant or have a child under 4, you may be entitled to get help to buy healthy food and milk.

If you're eligible, you'll be sent a Healthy Start card with money on it that you can use in some UK shops. We'll add your benefit onto this card every 4 weeks.

You can use your card to buy:

-
- *plain liquid cow's milk*
 - *fresh, frozen, and tinned fruit and vegetables*
 - *fresh, dried, and tinned pulses*

- *infant formula milk based on cow's milk*
-

You can also use your card to collect:

- *Healthy Start vitamins – these support you during pregnancy and breastfeeding*
 - *vitamin drops for babies and young children – these are suitable from birth to 4 years old*
-

*For more information and **to apply online**, please click the link [Get help to buy food and milk \(Healthy Start\)](#)*



We have a number of children (and grown ups!) who have nut allergies in school. With such allergies, sometimes just being around nuts (smell and touch) can trigger a dangerous allergic reaction.

Please do not send any products containing nuts into school.

Thank you,

Becky Lewis

Deputy Headteacher

Safe Treat List



We do not want to prevent children from bringing in treats for their friends if it is a special occasion such as a birthday. This is a long standing tradition that we would like to continue but it must be safe for all children.

Please see ideas for safe treat options that do not contain nuts below;

-
- Cadbury Dairy Milk
 - Cadbury Twirl
 - Cadbury Caramel
 - Cadbury Wispa
 - Cadbury Eclair
 - Cadbury Fudge
 - Cadbury Crunchie

- *Cadbury Buttons*
 - *Galaxy Minstrels*
 - *Galaxy Milk Chocolate*
 - *Galaxy Caramel*
 - *Galaxy Ripple*
 - *Mars bar*
 - *Kitkat (original)*
 - *Halal Haribo*
 - *Cadbury's Heroes (but remove mini Double Deckers - they are not made with nuts but made in a factory that processes nut products)*
-

School Term Dates for Next Year - 2024/25

Please see the calendar below showing all of the school term dates, bank holidays and teacher training days for the next academic year.



Manor Park Calendar 2024/25

August 2024						
Wk	Mo	Tu	We	Th	Fr	Sa Su
31				1	2	3 4
32	5	6	7	8	9	10 11
33	12	13	14	15	16	17 18
34	19	20	21	22	23	24 25
35	26	27	28	29	30	31

September 2024						
Wk	Mo	Tu	We	Th	Fr	Sa Su
35						1
36	2	3	4	5	6	7 8
37	9	10	11	12	13	14 15
38	16	17	18	19	20	21 22
39	23	24	25	26	27	28 29
40	30					

October 2024						
Wk	Mo	Tu	We	Th	Fr	Sa Su
40		1	2	3	4	5 6
41	7	8	9	10	11	12 13
42	14	15	16	17	18	19 20
43	21	22	23	24	25	26 27
44	28	29	30	31		

November 2024						
Wk	Mo	Tu	We	Th	Fr	Sa Su
44					1	2 3
45	4	5	6	7	8	9 10
46	11	12	13	14	15	16 17
47	18	19	20	21	22	23 24
48	25	26	27	28	29	30

December 2024						
Wk	Mo	Tu	We	Th	Fr	Sa Su
48						1
49	2	3	4	5	6	7 8
50	9	10	11	12	13	14 15
51	16	17	18	19	20	21 22
52	23	24	25	26	27	28 29
1	30	31				

January 2025						
Wk	Mo	Tu	We	Th	Fr	Sa Su
1			1	2	3	4 5
2	6	7	8	9	10	11 12
3	13	14	15	16	17	18 19
4	20	21	22	23	24	25 26
5	27	28	29	30	31	

February 2025						
Wk	Mo	Tu	We	Th	Fr	Sa Su
5						1 2
6	3	4	5	6	7	8 9
7	10	11	12	13	14	15 16
8	17	18	19	20	21	22 23
9	24	25	26	27	28	

March 2025						
Wk	Mo	Tu	We	Th	Fr	Sa Su
9						1 2
10	3	4	5	6	7	8 9
11	10	11	12	13	14	15 16
12	17	18	19	20	21	22 23
13	24	25	26	27	28	29 30
14	31					

April 2025						
Wk	Mo	Tu	We	Th	Fr	Sa Su
14		1	2	3	4	5 6
15	7	8	9	10	11	12 13
16	14	15	16	17	18	19 20
17	21	22	23	24	25	26 27
18	28	29	30			

May 2025						
Wk	Mo	Tu	We	Th	Fr	Sa Su
18				1	2	3 4
19	5	6	7	8	9	10 11
20	12	13	14	15	16	17 18
21	19	20	21	22	23	24 25
22	26	27	28	29	30	31

June 2025						
Wk	Mo	Tu	We	Th	Fr	Sa Su
22						1
23	2	3	4	5	6	7 8
24	9	10	11	12	13	14 15
25	16	17	18	19	20	21 22
26	23	24	25	26	27	28 29
27	30					

July 2025						
Wk	Mo	Tu	We	Th	Fr	Sa Su
27		1	2	3	4	5 6
28	7	8	9	10	11	12 13
29	14	15	16	17	18	19 20
30	21	22	23	24	25	26 27
31	28	29	30	31		

Bank holidays 2024/25

26 August '24	August Bank Holiday	26 December '24	Boxing Day	18 April '25	Good Friday	5 May '25	Early May Bank Holiday
25 December '24	Christmas Day	1 January '25	New Year's Day	21 April '25	Easter Monday	26 May '25	Spring Bank Holiday

Teacher Training Days

2 September 2024	3 September 2024	29 November 2024	31 March 2025	21 July 2025
------------------	------------------	------------------	---------------	--------------



Star of the Week



The value of the week is 'Resilience'. Here are Manor Park's Stars of the Week

Nursery Kidus

Indigo Farhana

Copper Amirah

Gold Lucas

Aqua Jasmine

Turquoise Yingxuen

Crimson Safa

Cerise Maryam

Bronze Adaeze

Ochre Isac

Ruby Husein

Topaz Eason

Teal Stela

Emerald Eric

Well done everyone!

School Policies

Please find our school policies on our website by clicking here:

<https://www.manorparkacademy.co.uk/about-us/policies/>

Have you moved house or changed your number?

Please let the main office know if any of your details change such as:

- *Your address*
- *Your phone numbers*

- *Your emergency contacts*

Just call 0121 3271023 or email enquiry@manorparkacademy.org

Thank you!

Apply for our Nursery or Reception Classes!



Do you have a child or know another parent with a child born between 01.09.2020 - 31.08.2021? We have spaces available in our lovely Nursery!

If you also have or know a parent with a child born between 01.09.19 - 31.08.20, we have spaces in our amazing Reception classes too!

Please contact the school office for a tour and a chat with our friendly team. You can also see more information here on our website: [Early Years – Manor Park Primary Academy \(manorparkacademy.co.uk\)](http://manorparkacademy.co.uk)

Dates for your Diary



*Next week is **Road Safety Week***

***Parent Phonics Workshop** (Year 1 parents please attend) - Monday 25th November 9.00am*

***Healthy Cooking Classes** - Every Thursday 9.15am - 11.15am*

***ESOL Classes** - Every Thursday 1.15pm - 3.15pm*

***Teacher Training Day for Phonics** - School Closed 29th November 2024*

Attendance Procedures



Please call 0121 327 1023 to report your child's absence by 9.30am

If you need support with your child's attendance, please contact Jo Green via email at enquiry@manorparkacademy.org or call the school office.



— AND — THE WINNERS *are...*

*House Points are now collected using Marvellous Me. **You can see you child's individual house points by clicking on the 'thumbs up' button.** However many 'thumbs up' they've had, this is the number of house points they have received in school!*

This week's winners overall are Edwards!

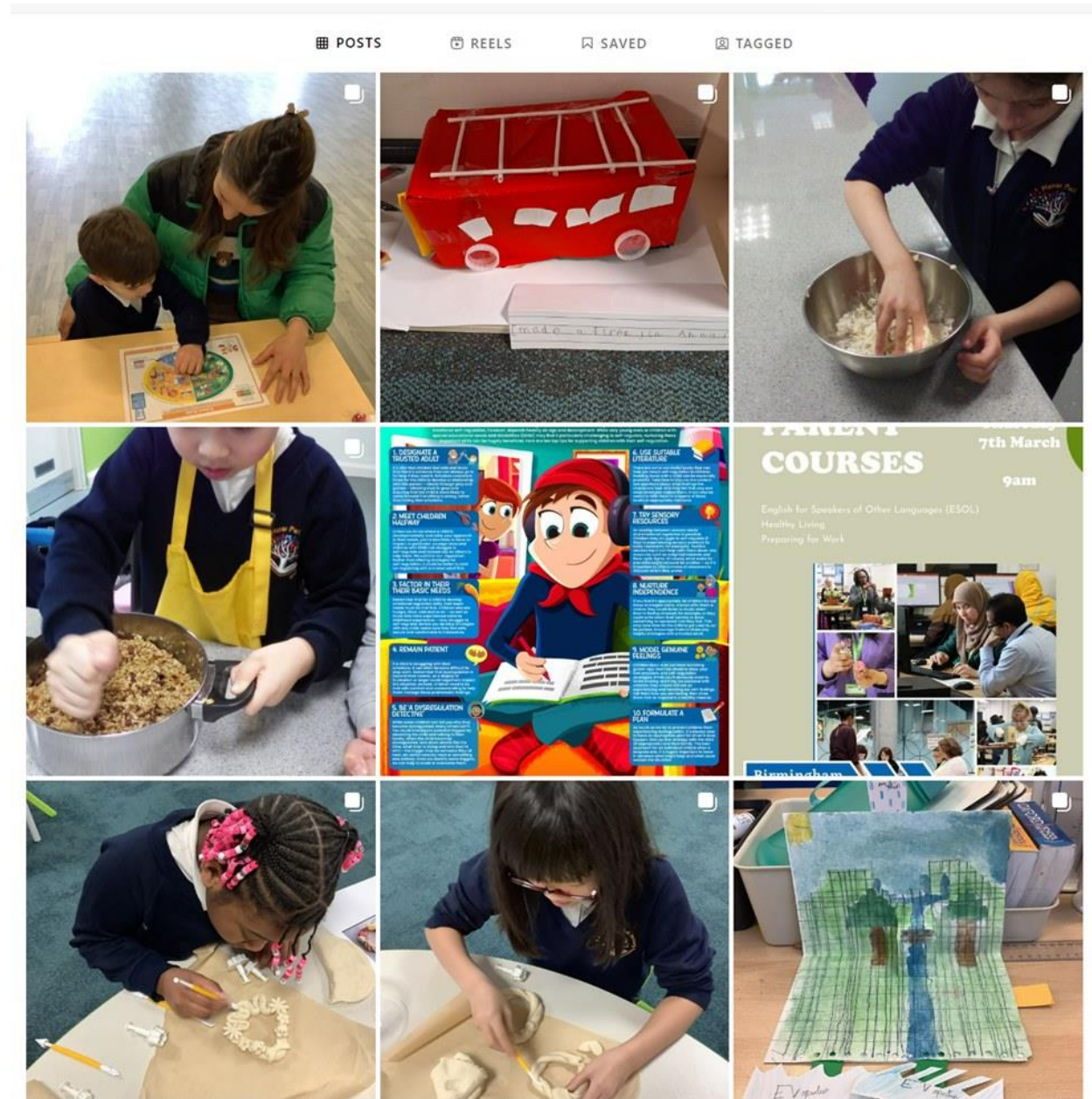
2nd place - Aston

3rd place - Berners Lee

4th place - Lightwood

Give us a follow on Instagram!

<https://www.instagram.com/manorparkprimaryacademy/>



Safeguarding and Wellbeing Update - Cycle Safety



10 Top Tips for Parents and Educators

TEACHING CYCLE SAFETY

Cycling is an amazing way to spend quality time together as a family, as well as keeping everyone healthy and active – and it's an excellent exercise, whatever the age of your children. Getting started can sometimes be daunting, and there are obvious safety concerns over youngsters who are still getting used to a bike – so follow our top tips to help you ride with confidence.

1 CONSIDER CYCLE TRAINING

Courses like Bikeability are extremely useful, and training in general has come a long way since cycling proficiency began; there are Bikeability courses for adults, too. Cycle training teaches invaluable skills (such as good road positioning, signalling and visibility), and can help both parents and children feel more at ease on busy streets.

2 USE A SUITABLE BIKE

Find a bike of an appropriate size for its rider and resist the temptation to have children 'grow into' theirs by buying one too large for them. A bigger bike will be heavier and more difficult to control, making accidents more likely and potentially putting youngsters off cycling forever. If your child has any specific physical needs, or has dyspraxia, then try out a trike, handcycle or other adaptive cycle to see what works best.

3 TRY A CARGO BIKE

Cargo bikes, particularly the box-bike style, are ideal for transporting small children around. Depending on the type of bike chosen – as well as the size and age of the children – it can be possible to transport up to four little ones in this way, with additional space for other cargo as well.

4 INSPECT YOUR CYCLE

It's a good idea to do some routine checks on any bike before going for a ride to make sure everything's working correctly. The 'M check' is particularly useful: assessing the condition and position of the bike's wheels, handlebars, brakes, pedals, chain and saddle, working from front to back. Online tutorial videos can also teach you how to carry out basic repairs if needed. For more complicated fixes, head to your local bike shop.

5 BRING SUITABLE GEAR

Ensure whatever you're wearing, and any attachments for your bike, are suitable for the ride. A waterproof jacket will let you cycle safely in almost any weather. Make sure any helmets are fitted correctly. If you're riding after dark, remember to fit your bikes with a white front light, a red rear light and a red rear reflector. These are required by law.

6 STICK TO FLAT TERRAIN

Take a smooth, flat route if possible, so it's more suitable for younger cyclists. You might be surprised by how many quiet roads or back streets there may be in your area. Don't be put off by an indirect but easier path as opposed to a shorter, busier one. Look out for the National Cycle Network, canal towpaths and even parks that you can cut through.

7 STAY ALERT AND IN SAFE FORMATIONS

For maximum protection and visibility, ride in a line with children in the middle and adults at either end. If you're the only adult present, take up a position at the rear to ensure all children remain in your sight. Don't be tempted to hug the kerb if cycling on the road – riding approximately a metre out will make you more noticeable to other road users, and you'll also stay clear of any debris in the gutter.

8 AVOID PARKED CARS

When riding past parked cars, try to stay at least a metre away, just in case anyone inside opens a door unexpectedly or the vehicle itself starts to move. This precaution will also deter anyone driving behind from trying to squeeze past you when there isn't enough space, so don't be afraid to ride in a prominent position.

9 START A 'BIKE BUS'

Cycling to school with other families is a potentially fun experience – one which comes with the added benefit of safety in numbers, in case anything goes wrong along the way. Team up with other parents, carers and educators and pick a day to cycle to school together. Who knows – maybe, in time, you'll have other folks asking to join you?

10 HAVE FUN!

Keep in mind that cycling should be fun! A good bike ride can be really enjoyable for adults and children alike, while also being a superb form of exercise. Ease children into the hobby by starting them off with shorter journeys – such as a trip to the park – and build them up to longer, more complicated outings. Some children may get bored on a longer ride, so try to keep a conversation going with them.

Meet Our Expert

Sophie Gordon is the campaigns manager at Cycling UK, a charity which inspires and enables people to start cycling. She has spent six years campaigning for safer roads and more protected cycle paths, while supporting communities to call for better cycling conditions where they live.

we are
cycling
uk

#WakeUp
Wednesday

The
National
College®

Source: See full reference list on guide page at: <https://nationalcollege.com/guides/teaching-cycle-safety>

X @wake_up_weds

f /www.thenationalcollege

@wake.up.wednesday

@wake.up.weds

Users of this guide do so at their own discretion. No liability is entered into. Current as of the date of release: 13.11.2024



**At Manor Park Primary
Academy everyone
has the right to feel safe.**

**At Manor Park Primary
Academy everyone
has the right to learn.**



**We are your Designated Safeguarding Leads.
We can help you.**



Ms Christine Chapman
Headteacher
DSL



Mrs Saima Mahmood
Teacher
DSL



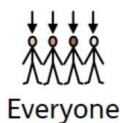
Miss Becky Lewis
**Deputy
Headteacher**
DSL



Mrs Natalie Brindley
SENDCo
DSL



Miss Jo Green
Lead DSL



Everyone



has

a



right

to



feel safe.



Please



talk to



us.

