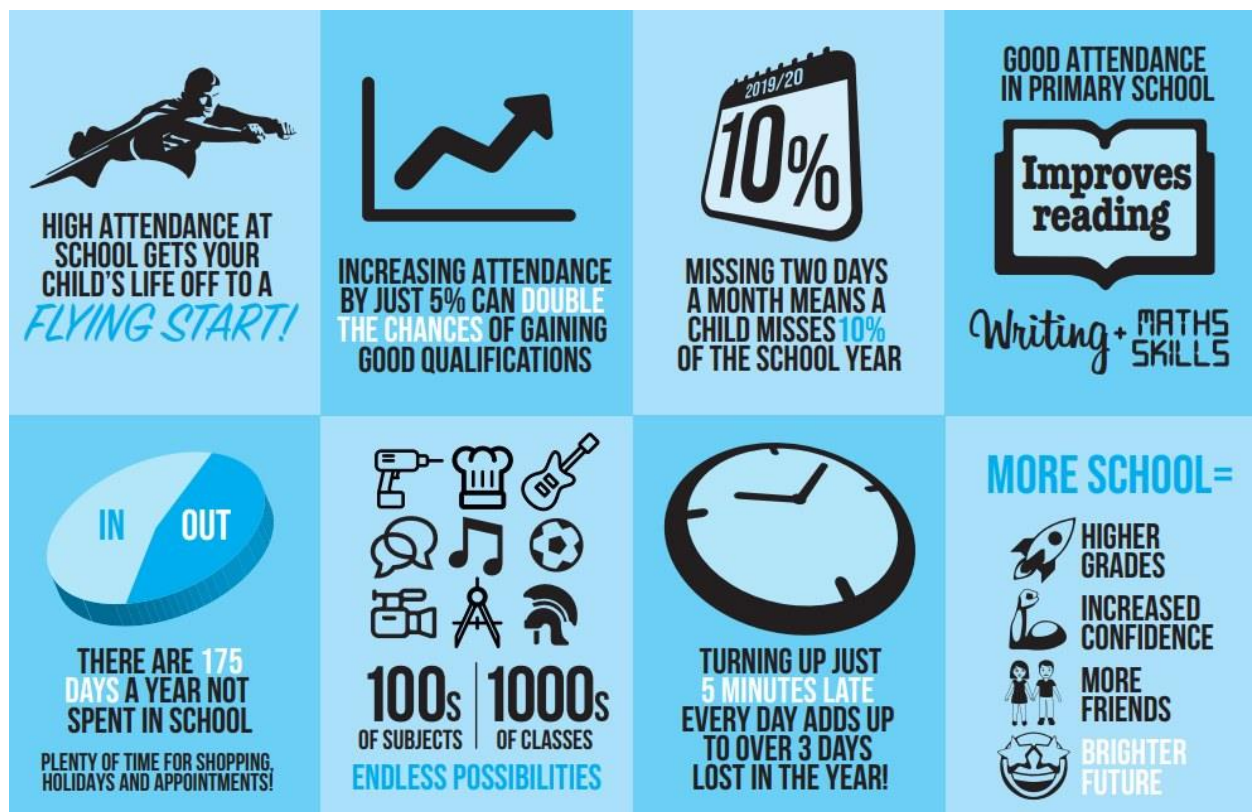




Newsletter for 12th December 2024

Every lesson counts - your child must attend school every single day for the best chance of success!





**"THIS MORNING, HE
WAS WORRIED ABOUT
SCHOOL... BUT LOOK
AT HIM NOW!"**

**MOMENTS
MATTER,
ATTENDANCE
COUNTS.**



HM Government

Head to the Education Hub to find out more.





Top Attendance for the Week

1st Place – crimson 97.5%

2nd Place – Bronze 96.6%

3rd Place – Cerise 96%

Prizes to be won!

Every Day Counts



From Monday 25th November for 3 weeks, we will be holding our 'Every Day Counts' prize draw.

If you are in school every day, on time, 100% of the week, your name will go into the class prize draw.

Every child who has been in 100% and on time will receive a certificate to add to your collection.
You've got this!

Attendance Team

Headteacher's Message



Dear Families,

This week has been a wonderful week for our community: Year 4 were amazing ambassadors for the school on Tuesday when they visited the Aston Villa ground as part of their 150 year celebrations, and when they created decorations for across the school as well; Reception and Year 1 created a fantastic nativity production for their families on Wednesday in two performances; Christmas Jumper day took place on Thursday and it was great to see so many families joining us for the Festive Christmas Fayre after school; parents and carers from Year 1 and Year 2 in school to support their children in DT workshops.

At the Fayre, Santa was delighted to meet all of the children, and the stalls and disco proved very popular too! Thank you for all of those who were able to come along, have a good time, and support school fundraising for special projects. Christmas Jumper day raises money for Save the Children and you can find out more about how to donate at <https://www.savethechildren.org.uk/christmas-jumper-day>.

Our 100% attenders celebrated with a Movie Morning on Friday and we hope to see even more children celebrating 100% attendance by the end of next term.

Next week, our Singalong takes place on Tuesday 17th December at 1:30 pm. There will be refreshments available so please bring along a £1 coin to enjoy a hot drink and mince pie.

At the end of this term, Mrs Toussaint, one of our Office Co-Ordinators, will be retiring and I'm sure you will join me in wishing her the best for the future. Mrs Whatmore, who currently works part-time, will be taking on the role full time from January.

On Thursday at 5:00 pm, we have a representative coming from Clubs Complete to answer any questions about wraparound after school provision at Manor Park. Please come along if you are interested in finding out more; if you can't attend, please email enquiry@manorparkacademy.org so that we can arrange a meeting at another time.

Last day of term is Friday 20th December and all pupils return to school after the New Year on Monday 6th January.

Have a lovely weekend,

Christine Chapman

Headteacher

Apply for free school meals



[Apply for free school meals - GOV.UK \(www.gov.uk\)](http://www.gov.uk)

Dear Parents and Carers,

Did you know that by registering your child for free school meals, you're not only ensuring they get a nutritious, hot meal every day but also supporting our school's funding? Every child who is registered for free school meals generates extra funding for the school, which we can invest directly back into your child's education and wellbeing. This funding helps us provide more resources, better learning environments, and additional support for our pupils. While all children in Reception, Year 1, and Year 2 (as well as those under the Mayor's Meals scheme in London) automatically receive free school meals, we only receive extra funding if you officially register your child. Please read the attached letter for information on how to apply.

FREE Vouchers for Milk and Food



What is Healthy Start?

If you're more than 10 weeks pregnant or have a child under 4, you may be entitled to get help to buy healthy food and milk.

If you're eligible, you'll be sent a Healthy Start card with money on it that you can use in some UK shops. We'll add your benefit onto this card every 4 weeks.

You can use your card to buy:

-
- *plain liquid cow's milk*
 - *fresh, frozen, and tinned fruit and vegetables*
 - *fresh, dried, and tinned pulses*

- *infant formula milk based on cow's milk*
-

You can also use your card to collect:

- *Healthy Start vitamins – these support you during pregnancy and breastfeeding*
 - *vitamin drops for babies and young children – these are suitable from birth to 4 years old*
-

*For more information and **to apply online**, please click the link [Get help to buy food and milk \(Healthy Start\)](#)*



We have a number of children (and grown ups!) who have nut allergies in school. With such allergies, sometimes just being around nuts (smell and touch) can trigger a dangerous allergic reaction.

Please do not send any products containing nuts into school.

Thank you,

Becky Lewis

Deputy Headteacher

Safe Treat List - Important



We do not want to prevent children from bringing in treats for their friends if it is a special occasion such as a birthday. This is a long standing tradition that we would like to continue but it must be safe for all children.

Please see ideas for safe treat options that do not contain nuts below;

-
- Cadbury Dairy Milk
 - Cadbury Twirl
 - Cadbury Caramel
 - Cadbury Wispa
 - Cadbury Eclair
 - Cadbury Fudge
 - Cadbury Crunchie

- *Cadbury Buttons*
 - *Galaxy Minstrels*
 - *Galaxy Milk Chocolate*
 - *Galaxy Caramel*
 - *Galaxy Ripple*
 - *Mars bar*
 - *Kitkat (original)*
 - *Halal Haribo*
 - *Cadbury's Heroes (but remove mini Double Deckers - they are not made with nuts but made in a factory that processes nut products)*
-

School Term Dates for Next Year - 2024/25

Please see the calendar below showing all of the school term dates, bank holidays and teacher training days for the next academic year.



Manor Park Calendar 2024/25

August 2024						
Wk	Mo	Tu	We	Th	Fr	Sa Su
31				1	2	3 4
32	5	6	7	8	9	10 11
33	12	13	14	15	16	17 18
34	19	20	21	22	23	24 25
35	26	27	28	29	30	31

September 2024						
Wk	Mo	Tu	We	Th	Fr	Sa Su
35						1
36	2	3	4	5	6	7 8
37	9	10	11	12	13	14 15
38	16	17	18	19	20	21 22
39	23	24	25	26	27	28 29
40	30					

October 2024						
Wk	Mo	Tu	We	Th	Fr	Sa Su
40		1	2	3	4	5 6
41	7	8	9	10	11	12 13
42	14	15	16	17	18	19 20
43	21	22	23	24	25	26 27
44	28	29	30	31		

November 2024						
Wk	Mo	Tu	We	Th	Fr	Sa Su
44					1	2 3
45	4	5	6	7	8	9 10
46	11	12	13	14	15	16 17
47	18	19	20	21	22	23 24
48	25	26	27	28	29	30

December 2024						
Wk	Mo	Tu	We	Th	Fr	Sa Su
48						1
49	2	3	4	5	6	7 8
50	9	10	11	12	13	14 15
51	16	17	18	19	20	21 22
52	23	24	25	26	27	28 29
1	30	31				

January 2025						
Wk	Mo	Tu	We	Th	Fr	Sa Su
1			1	2	3	4 5
2	6	7	8	9	10	11 12
3	13	14	15	16	17	18 19
4	20	21	22	23	24	25 26
5	27	28	29	30	31	

February 2025						
Wk	Mo	Tu	We	Th	Fr	Sa Su
5						1 2
6	3	4	5	6	7	8 9
7	10	11	12	13	14	15 16
8	17	18	19	20	21	22 23
9	24	25	26	27	28	

March 2025						
Wk	Mo	Tu	We	Th	Fr	Sa Su
9						1 2
10	3	4	5	6	7	8 9
11	10	11	12	13	14	15 16
12	17	18	19	20	21	22 23
13	24	25	26	27	28	29 30
14	31					

April 2025						
Wk	Mo	Tu	We	Th	Fr	Sa Su
14		1	2	3	4	5 6
15	7	8	9	10	11	12 13
16	14	15	16	17	18	19 20
17	21	22	23	24	25	26 27
18	28	29	30			

May 2025						
Wk	Mo	Tu	We	Th	Fr	Sa Su
18				1	2	3 4
19	5	6	7	8	9	10 11
20	12	13	14	15	16	17 18
21	19	20	21	22	23	24 25
22	26	27	28	29	30	31

June 2025						
Wk	Mo	Tu	We	Th	Fr	Sa Su
22						1
23	2	3	4	5	6	7 8
24	9	10	11	12	13	14 15
25	16	17	18	19	20	21 22
26	23	24	25	26	27	28 29
27	30					

July 2025						
Wk	Mo	Tu	We	Th	Fr	Sa Su
27		1	2	3	4	5 6
28	7	8	9	10	11	12 13
29	14	15	16	17	18	19 20
30	21	22	23	24	25	26 27
31	28	29	30	31		

Bank holidays 2024/25

26 August '24	August Bank Holiday	26 December '24	Boxing Day	18 April '25	Good Friday	5 May '25	Early May Bank Holiday
25 December '24	Christmas Day	1 January '25	New Year's Day	21 April '25	Easter Monday	26 May '25	Spring Bank Holiday

Teacher Training Days

2 September 2024	3 September 2024	29 November 2024	31 March 2025	21 July 2025
------------------	------------------	------------------	---------------	--------------



Star of the Week



Congratulations to our Stars of the Week!

Nursery Matida

Indigo Yousef

Gold Eiman

Copper Jasmine

Aqua Mary

Turquoise Aliza

Cerise Abdallah

Crimson Rubina

Ochre Whole class

Bronze Whole class

Ruby Yahyaa

Topaz Aleena

Teal Alshba

Emerald Tayiba

School Policies

Please find our school policies on our website by clicking here:

<https://www.manorparkacademy.co.uk/about-us/policies/>

Have you moved house or changed your number?

Please let the main office know if any of your details change such as:

- *Your address*
 - *Your phone numbers*
 - *Your emergency contacts*
-

Just call 0121 3271023 or email enquiry@manorparkacademy.org

Thank you!

Apply for our Nursery or Reception Classes!



Do you have a child or know another parent with a child born between 01.09.2020 - 31.08.2021? We have spaces available in our lovely Nursery!

If you also have or know a parent with a child born between 01.09.19 - 31.08.20, we have spaces in our amazing Reception classes too!

Please contact the school office for a tour and a chat with our friendly team. You can also see more information here on our website: [Early Years – Manor Park Primary Academy \(manorparkacademy.co.uk\)](http://manorparkacademy.co.uk)

Dates for your Diary



Festive Sing Along - 17th December 2.00pm

Last day of school - Friday 20th December

First day of school - Monday 6th January

Year 5 and 6 Residential Scout Adventures - 28th to 30th January

Attendance Procedures



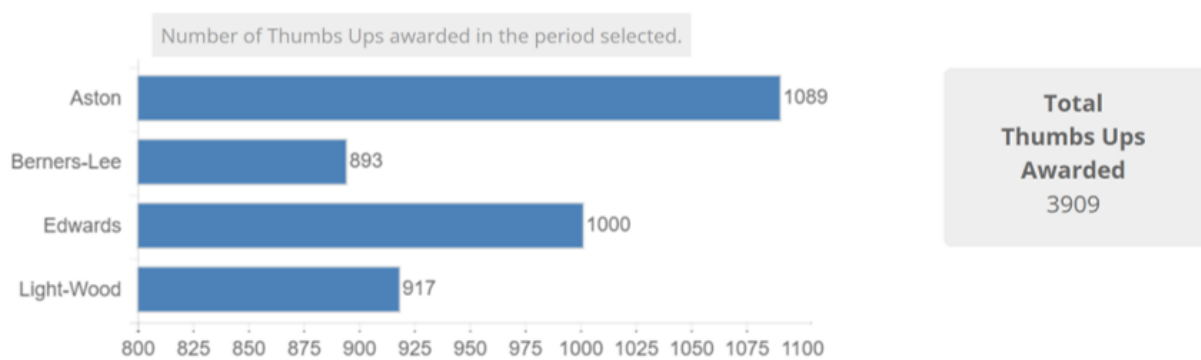
Please call 0121 327 1023 to report your child's absence by 9.30am

If you need support with your child's attendance, please contact Jo Green via email at enquiry@manorparkacademy.org or call the school office.

— AND — THE WINNERS *are...*

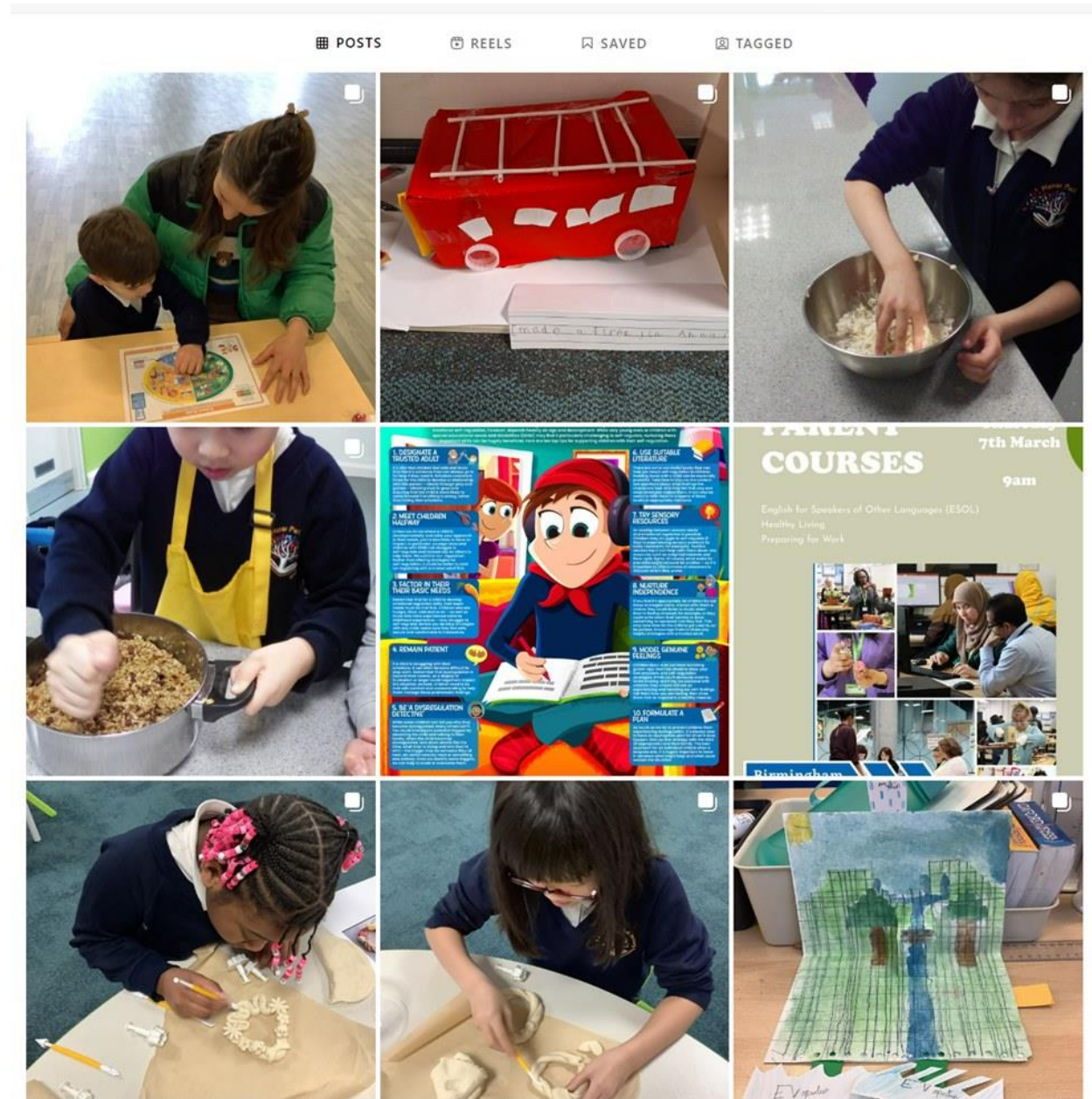
*House Points are now collected using Marvellous Me. **You can see you child's individual house points by clicking on the 'thumbs up' button.** However many 'thumbs up' they've had, this is the number of house points they have received in school!*

This week's winners overall are Aston



Give us a follow on Instagram!

<https://www.instagram.com/manorparkprimaryacademy/>



Safeguarding and Wellbeing Update - Safety over the Festive Season



10 Top Tips for Parents and Educators SAFETY OVER THE FESTIVE SEASON.

The holiday season, marked by Christmas and New Year, brings joy and togetherness but also presents unique safety challenges for children, families and educators. From busy holiday shopping, traveling and family gatherings to managing digital activity during school breaks, staying safe during this period requires heightened awareness. This guide offers practical tips to help families and educators maintain a more secure and fulfilling festive period.

1 MONITOR DIGITAL ACTIVITY

Children spend more time online during school holidays, increasing exposure to potential dangers such as cyberbullying, inappropriate content and online predators. Balancing screen time, avoiding harmful websites and ensuring children engage positively online can be difficult without proper monitoring tools. Set clear boundaries, encourage open discussions about online safety and use parental controls to manage content exposure and screen time effectively. Regular check-ins and positive reinforcement around digital habits encourage safe online behaviour.

2 PRACTICE FIRE SAFETY PROTOCOLS

The incidence of house fires increases during Christmas due to greater use of candles, cookers and electrical decorations. Open flames, electrical overloads and the need for quick response plans can make fire safety challenging. Ensure smoke detectors are operational, keep fire extinguishers on hand and teach children how to respond in case of a fire emergency. Avoid leaving cooking unattended and use fire-safe candles to prevent mishaps.

3 CREATE TRAVEL SAFETY PLANS

More families tend to travel during the holidays, resulting in busier roads, increased traffic accidents and weather-related hazards. Weather conditions, road rage, fatigue and busy airports can all compromise travel safety. Pack emergency kits and adhere to seatbelt laws. Plan routes in advance and allow extra travel time to avoid rushing and mitigate risks on busy roads.

4 BEWARE OF ALLERGIES

Holiday meals often involve many foods that may contain allergens. Cross contamination, unclear labelling and lack of allergy-friendly options can lead to severe reactions. Communicate any allergy needs to hosts, provide safe food alternatives and carry necessary medications like antihistamines or EpiPens. Teaching children how to advocate for themselves and recognise dangerous foods also contributes to safer celebrations.

5 PREVENT THE SPREAD OF ILLNESS

Cold weather and seasonal socialising can increase the spread of viruses like flu and COVID-19. Crowded gatherings, schools out of session and frequent travel can lead to higher infection risks. Emphasise hygiene, encourage vaccination, disinfect surfaces and isolate symptomatic individuals. Communication with children about proper hygiene practices is essential to reduce the spread of illness.

6 STAY VIGILANT ON THE ROAD

Increased holiday traffic heightens the risk of accidents for both drivers and pedestrians. Distracted driving, pedestrian safety and inclement weather can complicate road safety. Encourage pedestrian safety practices, avoid distracted driving and never drive under the influence.

7 MAINTAIN SAFE DECORATIONS

Festive decorations such as Christmas lights and candles can pose electrical, fire and choking hazards if mishandled. Frayed wires, toppling Christmas trees, small ornaments and open flames can be difficult to control, especially in busy households with children. Inspect and maintain decorations, secure Christmas trees, place fragile or small items out of reach and ensure candles are never left unattended. Testing smoke alarms and using flame-retardant decorations can significantly reduce risks.

8 SET BOUNDARIES FOR GIFTS

Some toys and gadgets can present choking, sharp-edge or safety risks, particularly for young children. Ensuring that gifts meet safety standards and are age appropriate can be complex with so many options available. Inspect all toys carefully and ensure any tech devices have parental controls. Setting expectations around safe gift use and discarding packaging that poses a risk also helps to prevent accidents.

9 ADDRESS STRESS & FATIGUE

Holiday pressures can lead to burnout, which affects both physical and mental health. Overpacked schedules and a lack of downtime can cause stress and fatigue, leading to accidents or poor decision making. Incorporate rest, maintain regular routines and seek support to reduce stress. Encourage activities that promote relaxation to create a healthier, happier holiday experience for everyone.

10 DRINK RESPONSIBLY

Alcohol is commonly present at holiday events, raising concerns about safety and supervision. Excessive alcohol consumption can lead to accidents, impaired judgment and lack of supervision for children. Designate responsible adults, limit consumption and provide transportation alternatives for guests. Teaching moderation and modelling responsible behaviour in front of children ensures that celebrations remain positive and secure.

Meet Our Expert

James Whelan is a chartered health and safety consultant with 10 years of experience in promoting family and community safety. Specialising in risk assessment and preventative strategies, he has worked with educational institutions, public health agencies and community groups to deliver safety education and training.



The National College®

Source: See full reference list on guide page at: <https://nationalcollege.com/guides/safety-over-the-festive-season>

X @wake_up_weds

f /www.thenationalcollege

ig @wake.up.wednesday

🎵 @wake.up.weds

Users of this guide do so at their own discretion. No liability is entered into. Current as of the date of release: 11.12.2024

e-Visas Important Information



The UK Government is replacing physical immigration documents with eVisas, a digital proof of immigration status.

Parents and guardians of children who are not British or Irish citizens, and whose children have either a biometric residence permit (BRP) card expiring on 31 December 2024, or a passport with an indefinite leave to remain ink stamp or vignette sticker, should take action to [access their eVisa now](#), and do so on behalf of their children too.

An eVisa cannot be lost or stolen and can be accessed online by visa holders at any time to prove their rights in the UK. It's free and their immigration status won't be affected

Click link above or here

https://homeoffice.brandworkz.com/BMS/albums/?album=3435&lightboxAccessID=9DCD0592-A9F9-45D9-BE76EEF9D44B9B30&utm_medium=email&utm_source=govdelivery



**At Manor Park Primary
Academy everyone
has the right to feel safe.**

**At Manor Park Primary
Academy everyone
has the right to learn.**



**We are your Designated Safeguarding Leads.
We can help you.**



Ms Christine Chapman
Headteacher
DSL



Mrs Saima Mahmood
Teacher
DSL



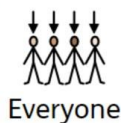
Miss Becky Lewis
**Deputy
Headteacher**
DSL



Mrs Natalie Brindley
SENDCo
DSL



Miss Jo Green
Lead DSL



Everyone



has

a



right

to



feel safe.

Please



us.



us.

